
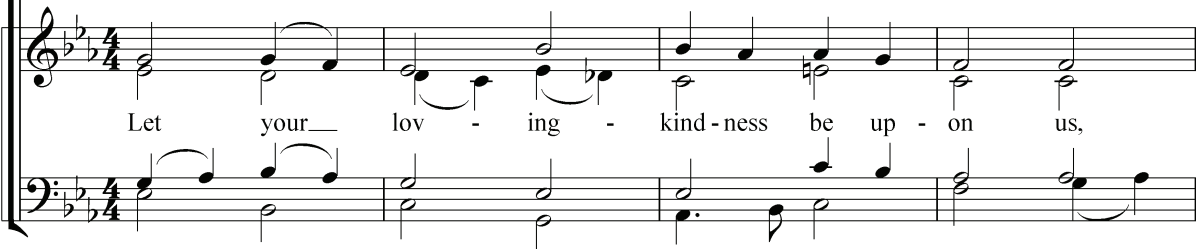


PROPER 14 ~ YEAR C

PSALM 33:12-22

desc.  Let your lov - ing - kind - ness be up -

Choir  Let your lov - ing - kind - ness be up - on us,

desc.  on us, put our trust in you.

Choir  as we have put our trust in you.

tone: EVENTIDE



- 12 Happy is the nation whose [God is] the LORD!*
Happy the people he has chosen to [be] his own!
- 13 **The LORD looks [down] from heaven,*
and beholds all the people [in] the world.**
- 14 From where he sits enthroned he [turns] his gaze*
on all who [dwell on] the earth.
- 15 **He fashions [all] the hearts of them*
and understands [all] their works.**

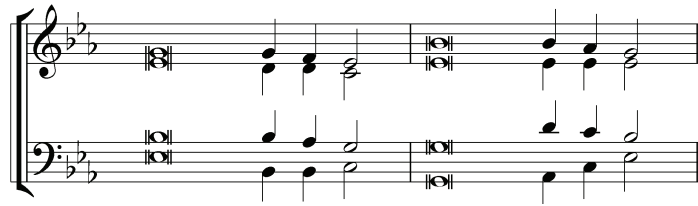
Antiphon

- 16 There is no king that can be saved by a [might]-y army;*
a strong man is not delivered by [his] great strength.
- 17 **The horse is a vain [hope for] deliverance;*
for all its strength it [can]-not save.**

continued on next page

PSALM 33 ~ CONT.

tone: EVENTIDE



- 18 Behold the eye of the LORD is upon [those] who fear him,*
on those who wait up-[on] his love,
19 **to pluck their [lives] from death,***
and to feed them in [time] of famine.

Antiphon

- 20 Our soul [waits for] the LORD;*
he is our [help and] our shield.
21 **Indeed our heart re-[joices] in him,***
for in his holy name we [put] our trust.
22 Let your lovingkindness O [LORD be] upon us,*
as we have put our [trust] in you.

Antiphon

