



# PROPER 7 ~ YEAR C

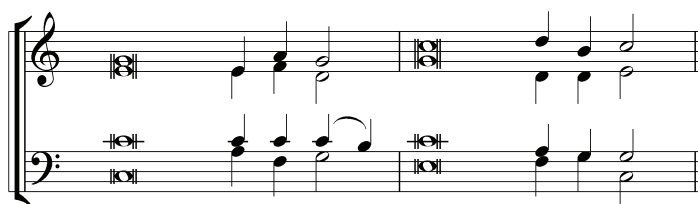
## PSALM 22:18-27

desc.  In the midst of the con - gre - ga - tion I will praise you.

Choir  In the midst of the con - gre - ga - tion I will praise you.

The musical score for the descant and choir parts is in 4/4 time. The descant part is written on a single treble clef staff. The choir part is written on two staves: a treble clef staff and a bass clef staff. Both parts feature a triplet of eighth notes in the first measure of each line. The lyrics are: "In the midst of the con - gre - ga - tion I will praise you."

tone: ST. ANNE



The musical notation for the tone is in 4/4 time, featuring a treble clef and a bass clef. It consists of a single melodic line in the treble clef and a supporting bass line in the bass clef. The melody is simple and consists of a few notes, with a final cadence.

- 18 Be not far a-[way] O LORD;\*  
you are my strength; ... [hasten] to help me.
- 19 Save me [from] the sword,\*  
my life from the power [of] the dog.
- 20 Save me from the [li]-on's mouth,\*  
my wretched body from the horns of [wild] bulls.
- 21 I will declare your [name to] my brethren;\*  
in the midst of the congregation [I] will praise you.

### *Antiphon*

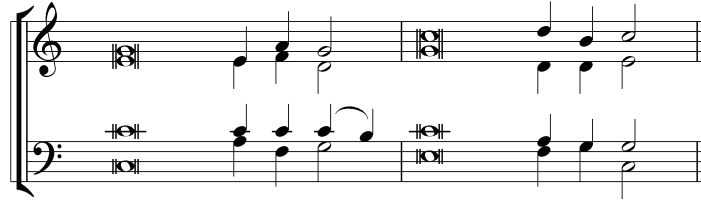
- 22 Praise the LORD [you] that fear him;\*  
stand in awe of him O offspring of Israel; ... all you of Jacob's [line] give glory.
- 23 For he does not despise nor abhor the poor in their poverty; ...  
neither does he [hide] his face from them;\*  
but when they cry to [him] he hears them.
- 24 My praise is of him in the [great] assembly;\*  
I will perform my vows in the presence of [those] who worship him.
- 25 The poor shall eat and be satisfied, ...  
and those who seek the [LORD] shall praise him:\*  
"May your [heart live] forever!"

### *Antiphon*

*continued on next page*

PSALM 22 ~ CONT.

*tone: ST. ANNE*



- 26 All the ends of the earth shall remember and [turn to] the LORD,\*  
and all the families of the nations shall [bow] before him.
- 27 For kingship be-[longs to] the LORD;\*  
he rules [over] the nations.

*Antiphon*



ALTERNATE CHOIR VERSES



- 20 Save me from the [li]-on's mouth,\*  
my wretched body from the horns of [wild] bulls.
- 24 My praise is of him in the [great] assembly,\*  
I will perform my vows in the presence of [those] who worship him.